

# TECHNICAL BROCHURE: ECO 32 profiles

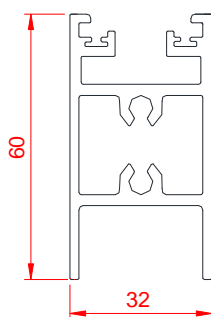
## Description

ECO 32 profiles is formed by 32mm width robust frames and it has been designed to get maximum sealing, so that it's the most suitable solution when the energy efficiency is the most important request. We can get high level thermal transmittance values for a sliding enclosure, thanks to overlapped rubber weatherstrips and brushess for sliding leaves. Beside that we can install thermal double glass to get better thermal transmittance level. These are main features of ECO 32 profiles:

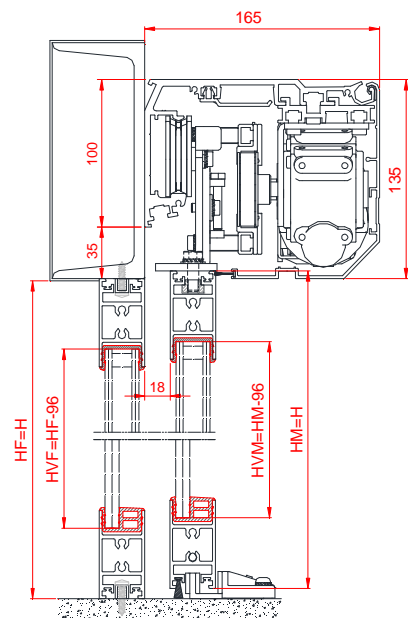
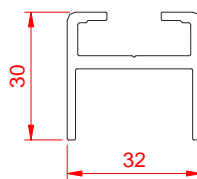
- The set includes 5 aluminium frames, 4 rubber weatherstrips and 1 brush
- Sliding and fixed leaves are formed by same 2 profiles, one for horizontal frames and the other for vertical ones.
- Fastening of frames to 90° with 2 screws and a wedge.
- Installation measures are designed to fulfill the safety standard EN 16005 and it's tough enough to pass the tests of EN 16361 product standard.
- Great weather sealing thanks to overlapped rubber weatherstrips and lower brushes.
- It's possible to install 8mm, 10mm, 12mm thickness laminated glass and 22mm and 24mm thermal double glass.
- There is the option to include manual lock in ECO 32 Security versión.

## Dimensions

Horizontal frame



Vertical frame



## Finishing

- ✓ Powder coated: all colors of RAL.
- ✓ Anodized: silver, bronze, black, titanium and special anodizing

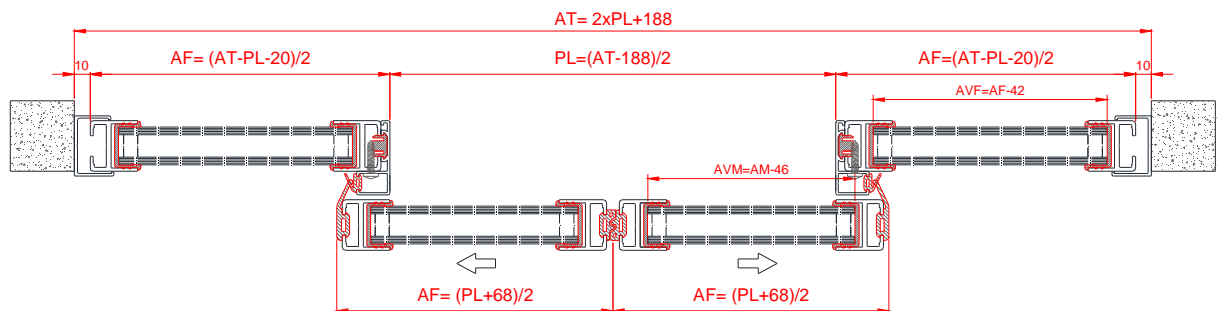
# TECHNICAL BROCHURE: ECO 32 profiles

## Features

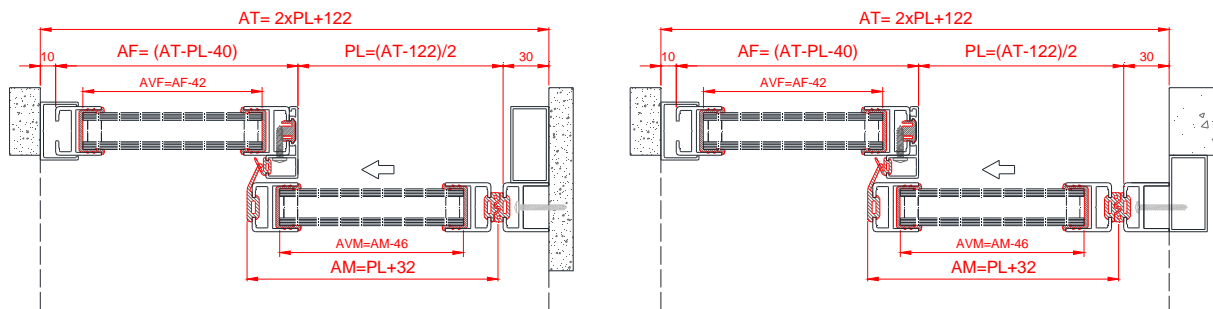
- ✓ Horizontal frame measures: 32x60mm; Vertical frame measures: 32x30mm
- ✓ Extruded aluminium profiles in 6063 alloy under ISO 9002 certification.
- ✓ Glass thickness: from 8 to 24 mm
- ✓ Manual lock option in ECO 32 Security version
- ✓ Right angle fixing in frames

## Sections

- 2 sliding leaves + 2 fixed leaves



- 1 sliding leaf + 1 fixed leaf



## Limits

Profile	Max. weight (kg)	Max. Leaf height (mm)	Leaf width (mm)	Glass thickness (mm)	Overlap (mm)
ECO 32	160	3000	500 ÷ 2000	8 ÷ 24	34